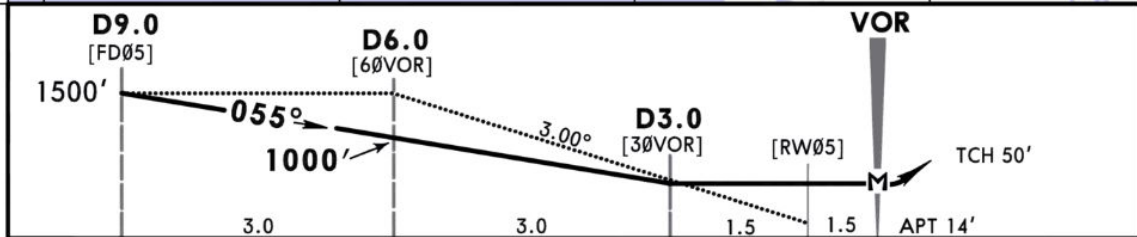
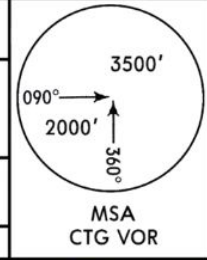


ADDITIONAL RUNWAY INFORMATION

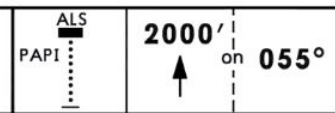
RWY		USABLE LENGTHS			WIDTH
		Threshold	Landing Beyond	Take-off	
05	RL ALS PAPI-L (angle 3.0°)	RVR			148' 45m
23	RL HIALS PAPI-L (angle 3.0°)	RVR	8481' 2585m		

TAKE-OFF	
AIR CARRIER (JAA)	
All Rwys	
	RCLM (DAY only) or RL
A	250m
B	300m
C	
D	

*D-ATIS 127.6		*CHITTAGONG Tower (APP/TWR) 118.4		*Ground 121.8	
VOR CTG 113.4	Final Apch Crs 055°	Minimum Alt D6.0 1000' (986')	MDA(H) 500' (486')	Apt Elev 14'	
MISSED APCH: Climb to 2000' on track 055° and contact ATC.					
Alt Set: hPa		Apt Elev: 1 hPa		Trans level: FL 60	
				Trans alt: 4000'	



Gnd speed-Kts	70	90	100	120	140	160
Descent Angle 3.00°	372	478	531	637	743	849



STRAIGHT-IN LANDING RWY 05	
MDA(H) 500' (486')	
ALS out	
A	1600m
B	2000m
C	2800m
D	2800m

PANS OPS

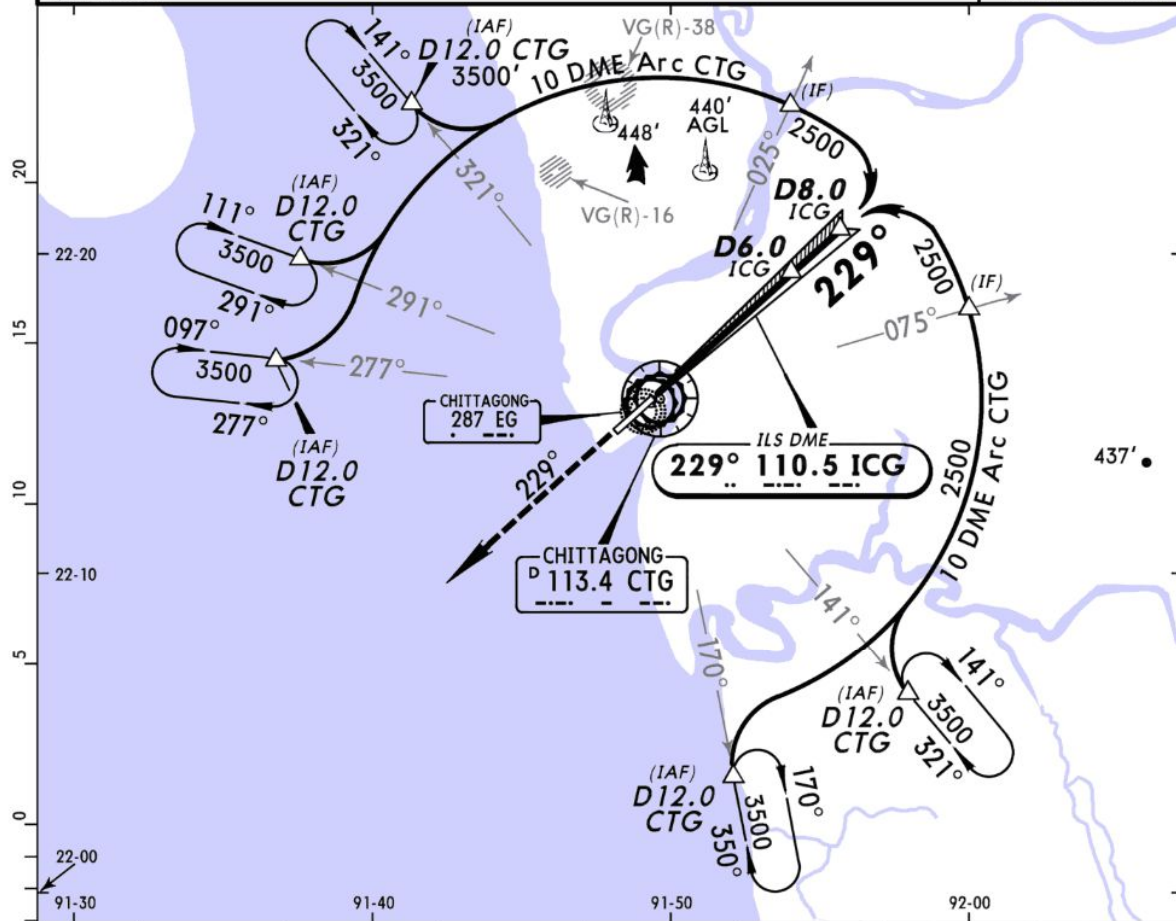
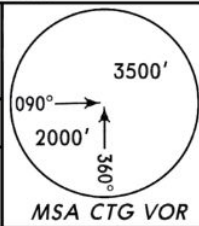
THIS CHART IS A PART OF NAVIGRAPH CHARTS AND IS INTENDED FOR FLIGHT SIMULATION ONLY

Chart linked to Navimark account "Traumacoll" (michel.berthoin@hilitraumacoll.ch)

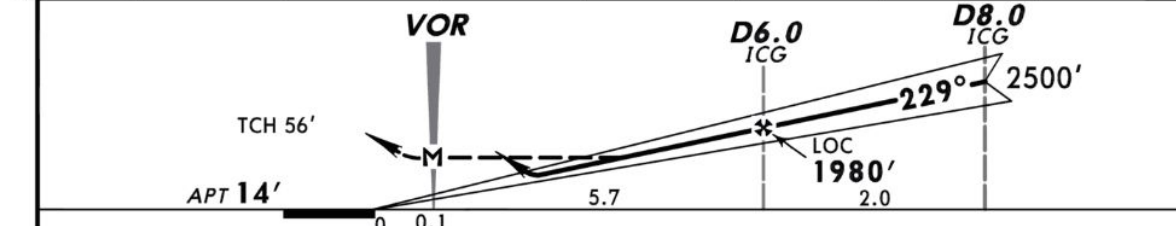
VGEG/CGP
SHAH AMANAT INTL

JEPPESEN CHITTAGONG, BANGLADESH
 14 NOV 14 (11-1) **VOR ILS DME-Arc Rwy 23**

*D-ATIS 127.6		*CHITTAGONG Tower (APP/TWR) 118.4		*Ground 121.8	
LOC ICG 110.5	Final Apch Crs 229°	GS No Altitude published	ILS DA(H) Refer to Minimums	Apt Elev 14'	
MISSED APCH: Climb to 2000' on track 229° and contact ATC.					
Alt Set: hPa		Apt Elev: 1 hPa		Trans level: FL 60	
CAUTION: Passing ships at the apch area approx 0.5 NM from thresh with mast heights up to 150'.				Trans alt: 4000'	



LOC (GS out)	ICG DME	1.0	2.0	3.0	4.0	5.0	6.0
	ALTITUDE	390'	710'	1030'	1350'	1660'	1980'



Gnd speed-Kts	70	90	100	120	140	160	HIALS PAPI 2000' on 229°
ILS GS or LOC Descent Angle 3.00°	372	478	531	637	743	849	
MAP at VOR							

STRAIGHT-IN LANDING RWY 23			
ILS DA(H) A: 314' (300') C: 334' (320') B: 326' (312') D: 345' (331')		LOC (GS out) MDA(H) 430' (416')	
FULL	ALS out		ALS out
A			
B	RVR 800m VIS 1000m	1400m	2400m
C			
D			

CHANGES: Procedure.

© JEPPESEN, 2002, 2014. ALL RIGHTS RESERVED.

THIS CHART IS A PART OF NAVIGRAPH CHARTS AND IS INTENDED FOR FLIGHT SIMULATION ONLY

Chart linked to Navigraph account "Tournesol" (michel-schopfer@bluewin.ch)