

03247

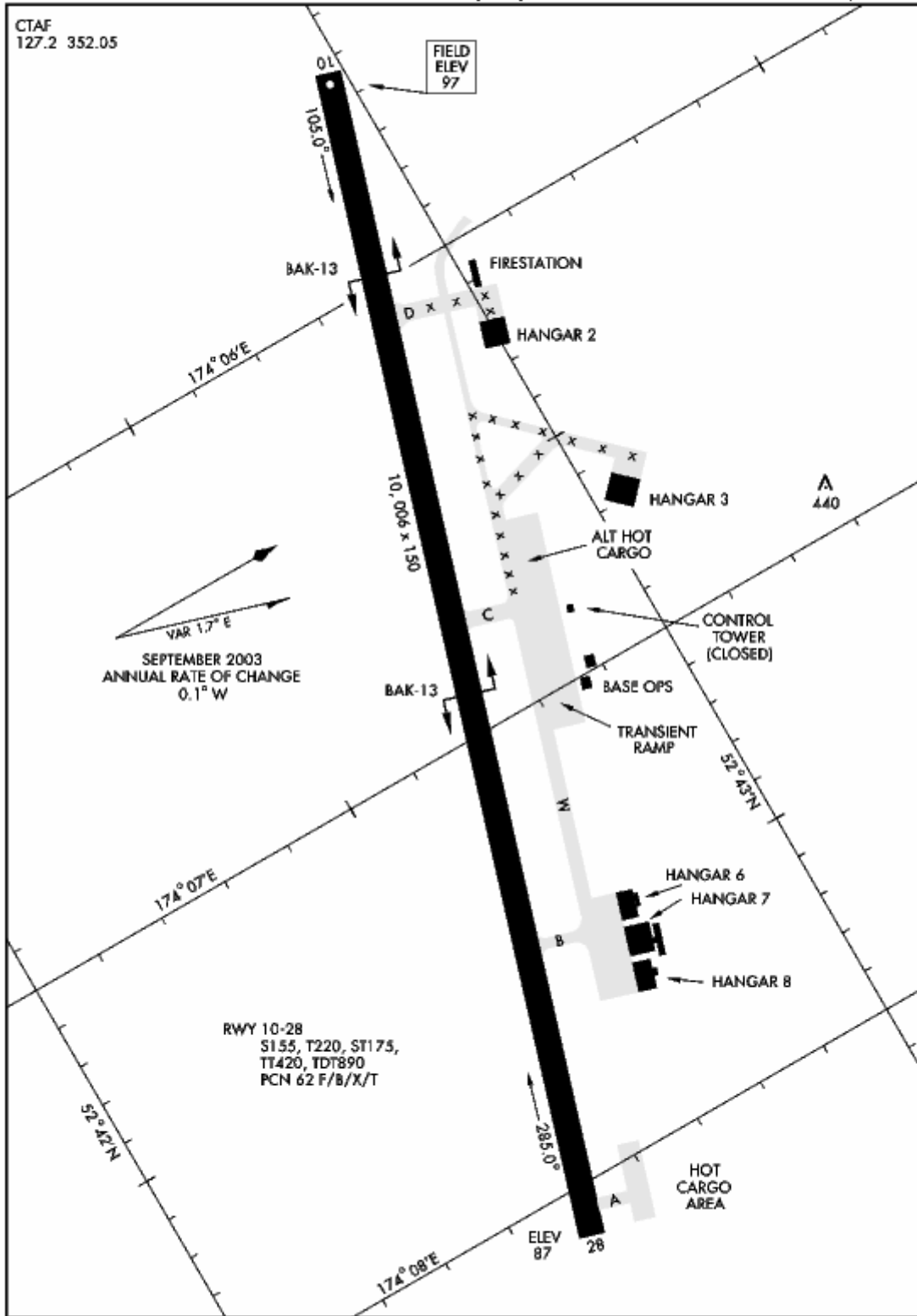
# AIRPORT DIAGRAM

AFD-1246 [USAF]

EARECKSON AS (PASY)

SHEMYA ISLAND, ALASKA

CTAF  
127.2 352.05



# AIRPORT DIAGRAM

WGS DATUM

SHEMYA ISLAND, ALASKA

EARECKSON AS (PASY)

**Effective 2 OCT 2003 - 30 OCT 2003**

SHEMYA I., ALEUTIAN I., ALASKA

# HI-VOR/DME or TACAN RWY 10

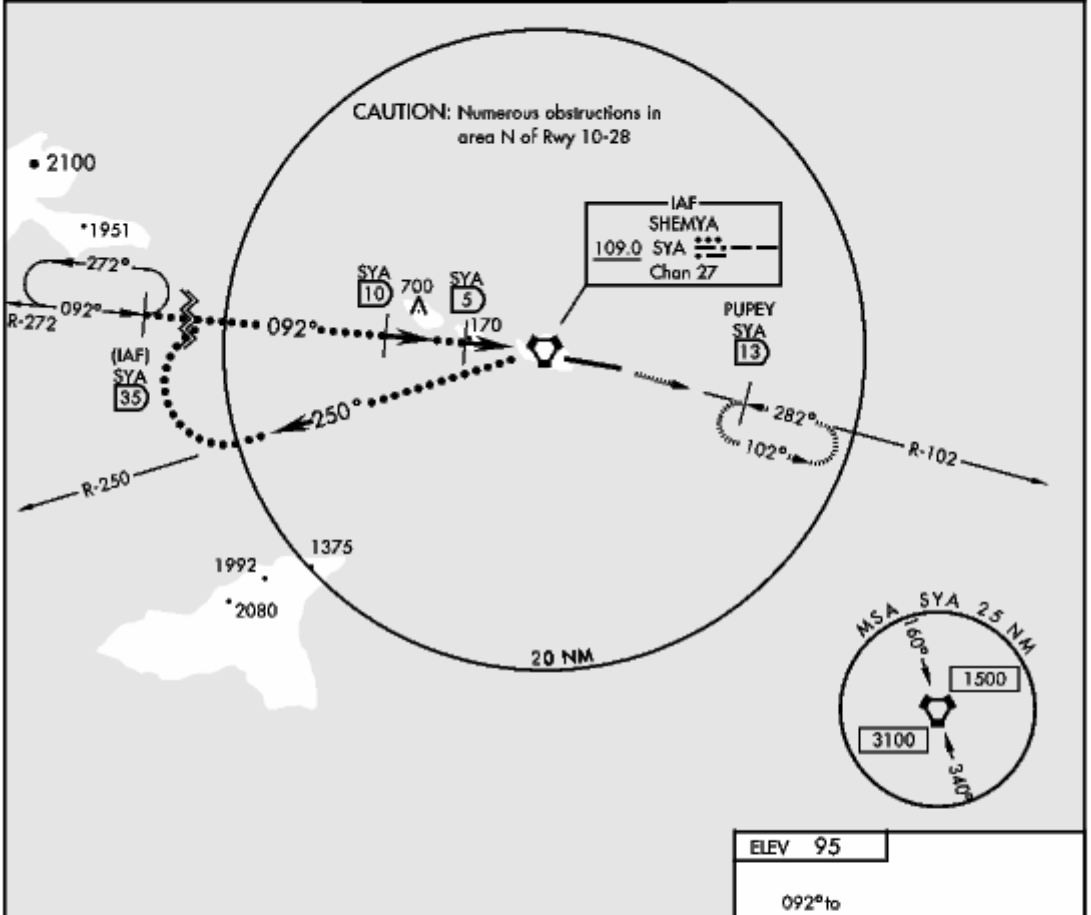
VORTAC SYA 109.0 Chan 27	APCH CRS 092°	Rwy ldg 10,006 TDZE 95 Arprt Elev 95	JAL-1246 [USAF]	EARECKSON AS (PASY)
--------------------------------	------------------	--	-----------------	---------------------

\* When ALS inop, increase vis ½ mile.  
 \*\* Circling not authorized in area N of Rwy 10-28

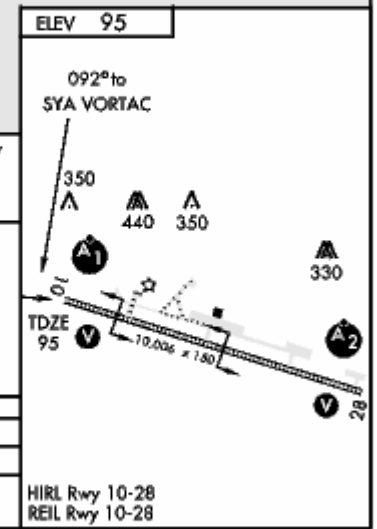
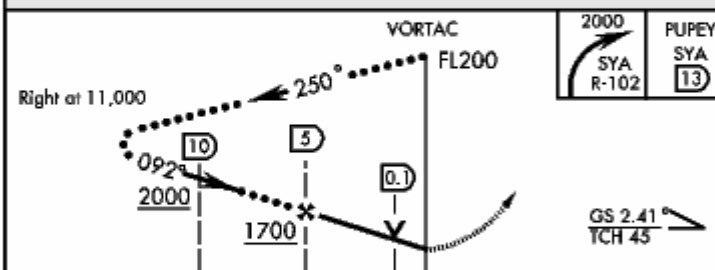


MISSED APPROACH: Climb to 2000 on SYA R-102 and hold at PUPEY.

ANCHORAGE CENTER 119.1 339.8	CTAF 127.2 352.05 0	ASOS 135.65
---------------------------------	------------------------	----------------



EMERG SAFE ALT 100 NM 5100



CATEGORY	C	D	E
S-10*	460-1	365 (400-1)	
CIRCUING**	560-1½ 465 (500-1½)	660-2 565 (600-2)	

SHEMYA I., ALEUTIAN I., ALASKA 52° 43' N-174° 07' E EARECKSON AS (PASY) 03247

# HI-VOR/DME or TACAN RWY 10

Effective 2 OCT 2003 - 30 OCT 2003

SHEMYA I., ALEUTIAN I., ALASKA

# VOR/DME or TACAN RWY 10

VORTAC SYA <b>109.0</b> Chan 27	APCH CRS <b>092°</b>	Rwy ldg <b>10,006</b> TDZE <b>95</b> Arpt Elev <b>95</b>	AL-1246 [USAF]	EARECKSON AS (PASY)
---------------------------------------	-------------------------	--	----------------	---------------------

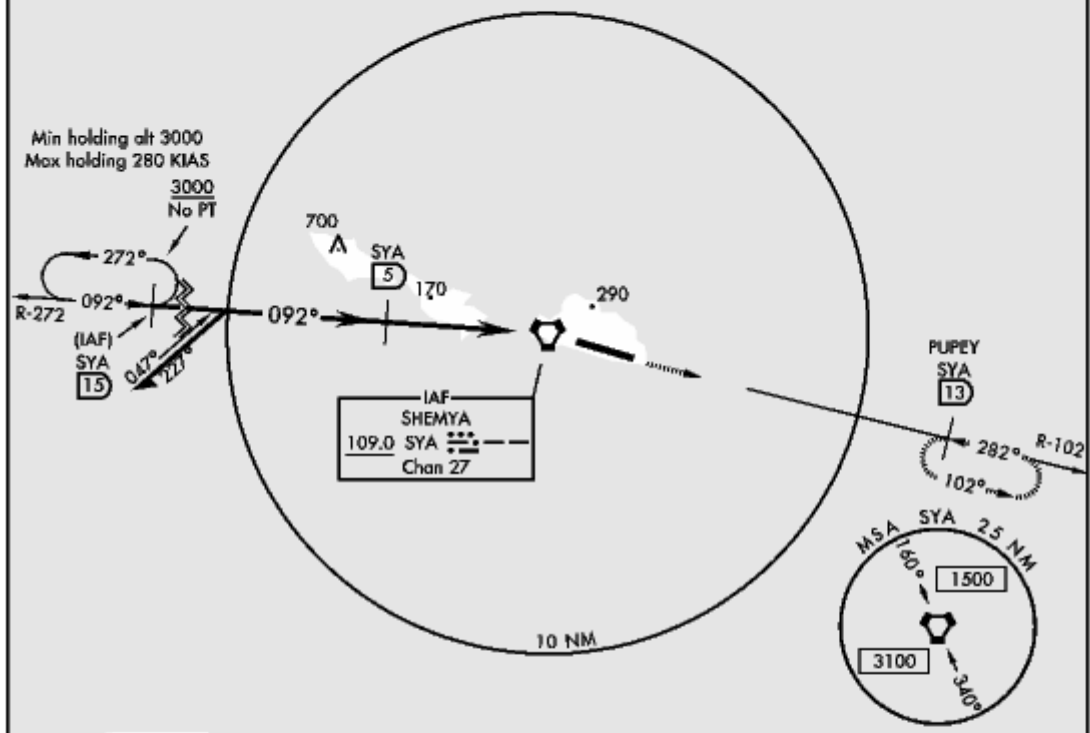
• When ALS inop, increase vis 1/2 mile.  
 •• Circling Not Authorized in area N of Rwy 10-28.



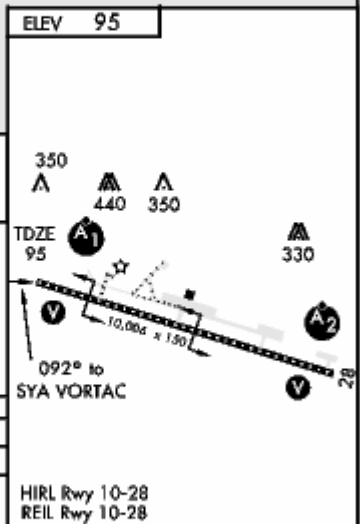
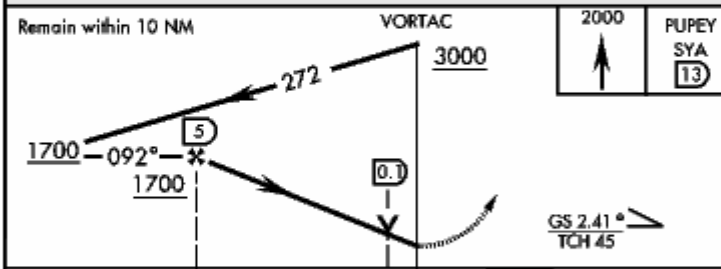
MISSED APPROACH: Climb to 2000 direct PUPEY and hold

ANCHORAGE CENTER <b>119.1 339.8</b>	CTAF <b>127.2 352.05 0</b>	ASOS <b>135.65</b>
--	-------------------------------	-----------------------

CAUTION: Numerous obstructions in area N of Rwy 10-28.



EMERG SAFE ALT 100 NM 5100



CATEGORY	A	B	C	D
S-10*	460-1 365 (400-1)			
CIRCLING**	460-1 1/2 365 (400-1 1/2)	560-1 1/2 465 (500-1 1/2)	660-2 565 (600-2)	

SHEMYA I., ALEUTIAN I., ALASKA  
03247

52° 43' N-174° 07' E

EARECKSON AS (PASY)

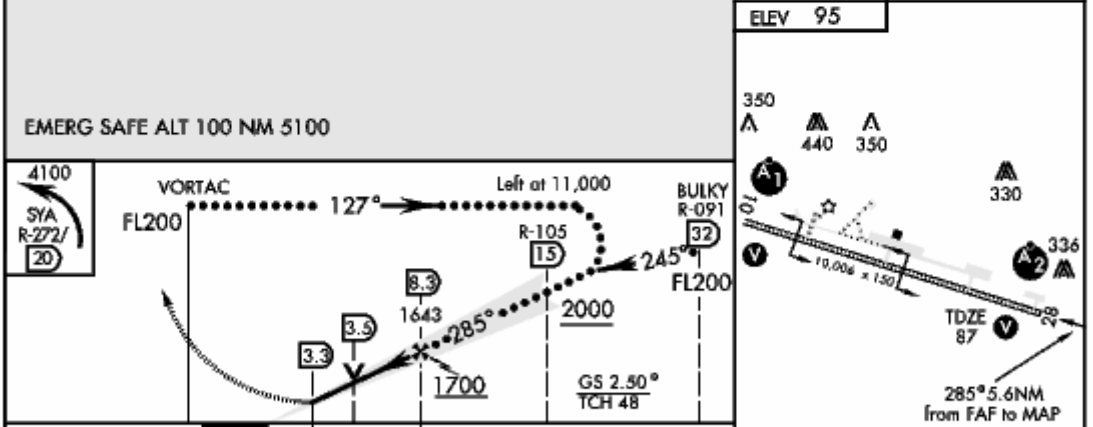
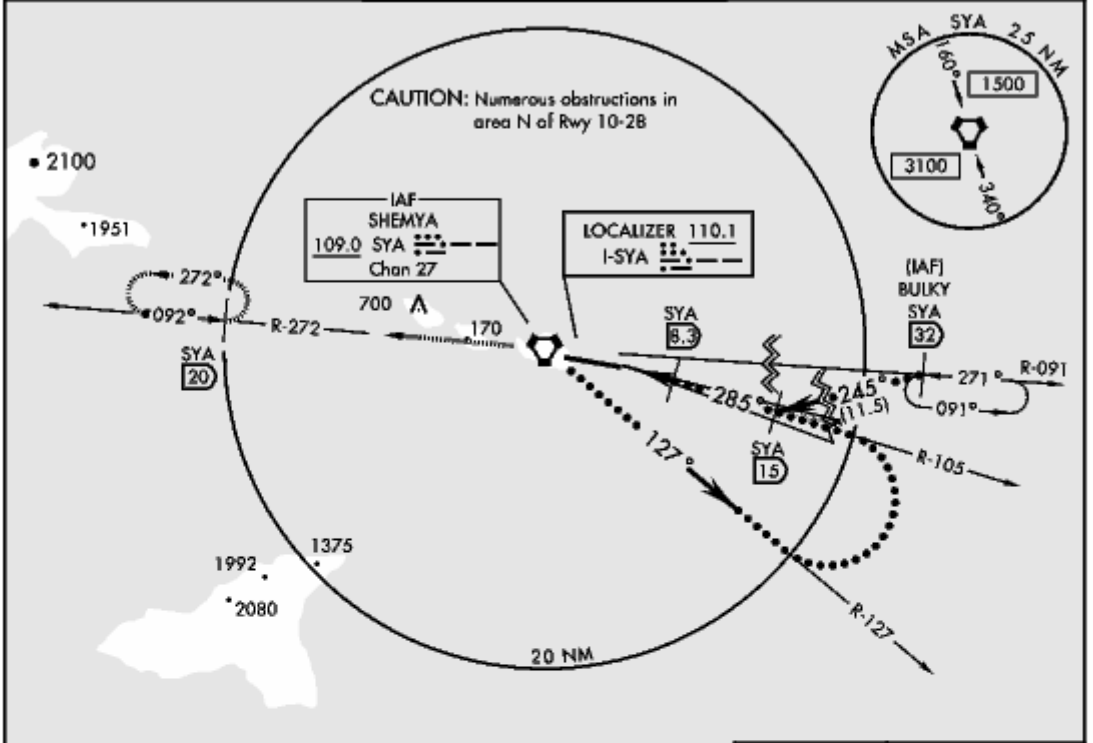
# VOR/DME or TACAN RWY 10

Effective 2 OCT 2003 - 30 OCT 2003

SHEMYA I., ALEUTIAN I., ALASKA

# HI-ILS RWY 28

LOC I-SYA <b>110.1</b>	APCH CRS <b>285°</b>	Rwy ldg <b>10,006</b> TDZE <b>87</b> Arprt Elev <b>95</b>	JAL-1246 [USAF]	EARECKSON AS (PASY)
* When ALS inop, increase vis 1/2 mile.		SALS		MISSED APPROACH: Climb to 4100 on R-272 and hold of 20 DME.
** Circling not authorized in area N of Rwy 10-28				
ANCHORAGE CENTER <b>119.1 339.8</b>		CTAF <b>127.2 0 352.05 0</b>		ASOS <b>135.65</b>



ELEV 95					
350	440	350			
330	336				
TDZE 87					
285° 5.6 NM from FAF to MAP					
CATEGORY	C	D	E		
S-ILS 28 *	287-3/4	200	[200-3/4]		
S-LOC/DME 28 *	340-3/4	253	[300-3/4]		
CIRCLING **	560-1 1/2 465 [500-1 1/2]	660-2	565	[600-2]	
HIRL Rwy 10-28 REIL Rwy 10-28					
FAF to MAP 5 NM					
Knots	120	140	160	180	200
Min:Sec	2:30	2:09	1:53	1:40	1:30

SHEMYA I., ALEUTIAN I., ALASKA 52° 43'N-174° 07'E EARECKSON AS (PASY)

# HI-ILS RWY 28

**Effective 2 OCT 2003 - 30 OCT 2003**

SHEMYA I., ALEUTIAN I., ALASKA

# HI-VOR/DME or TACAN RWY 28

VORTAC SYA <b>109.0</b> Chan <b>27</b>	APCH CRS <b>280°</b>	Rwy ldg <b>10,006</b> TDZE <b>87</b> Arpt Elev <b>95</b>
--	-------------------------	--

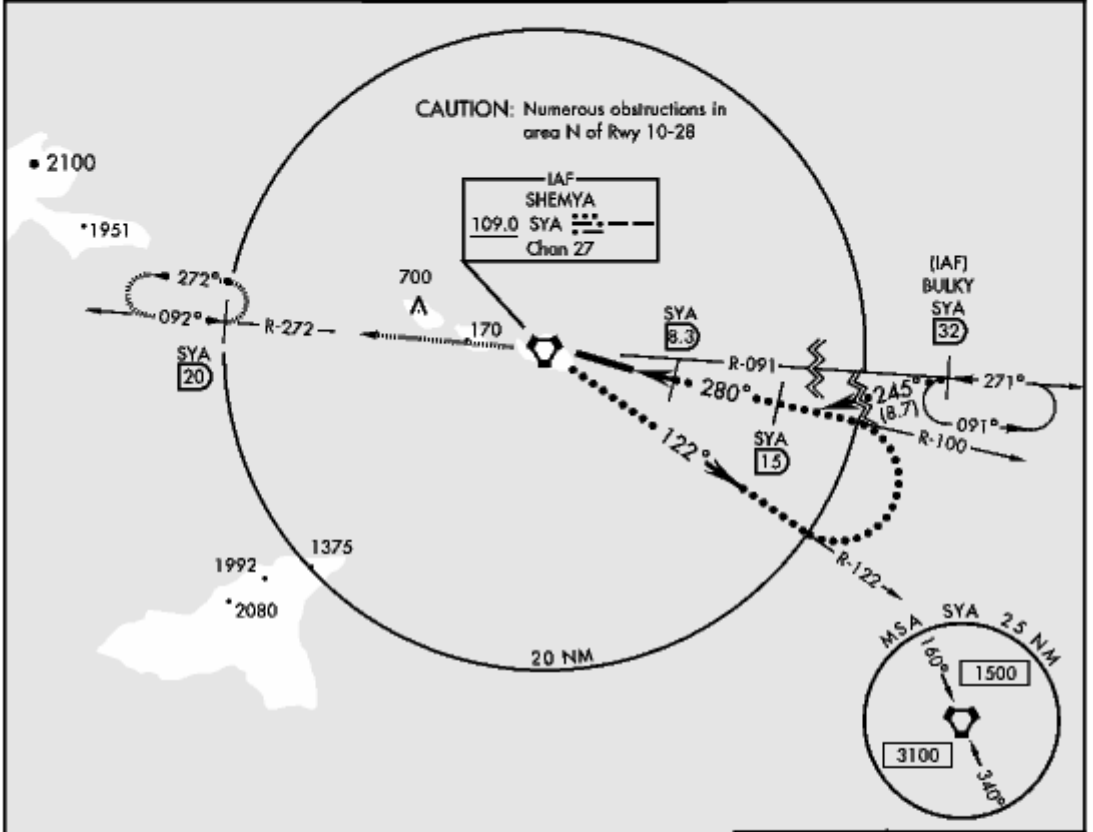
JAL-1246 [USAF] EARECKSON AS (PASY)

• When ALS inop, increase vis ¼ mile.  
 \*\* Circling not authorized in area N of Rwy 10-28

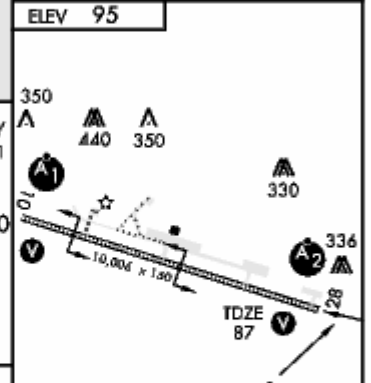
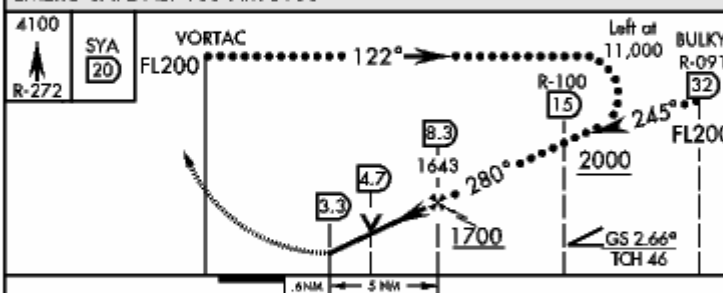


MISSED APPROACH: Climb to 4100 on R-272 and hold at 20 DME.

ANCHORAGE CENTER <b>119.1 339.8</b>	CTAF <b>127.2 352.05 0</b>	ASOS <b>135.65</b>
--	-------------------------------	-----------------------



EMERG SAFE ALT 100 NM 5100



CATEGORY	C	D	E
S-28 *	640-1¼ 553 (600-1¼)	640-1½ 553 (600-1½)	640-1¾ 553 (600-1¾)
CIRCLING **	640-1½ 545 (600-1½)	660-2	565 (600-2)

HIRL Rwy 10-28  
REIL Rwy 10-28

SHEMYA I., ALEUTIAN I., ALASKA  
03247

52° 43'N-174° 07'E

EARECKSON AS (PASY)

# HI-VOR/DME or TACAN RWY 28

**Effective 2 OCT 2003 - 30 OCT 2003**

SHEMYA I., ALEUTIAN I., ALASKA

# ILS RWY 28

LOC I-SYA <b>110.1</b>	APCH CRS <b>285°</b>	Rwy ldg <b>10,006</b> TDZE <b>87</b> Arpt Elev <b>95</b>	AL-1246 [USAF]	EARECKSON AS (PASY)
---------------------------	-------------------------	--	----------------	---------------------

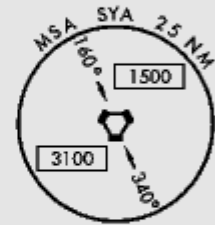
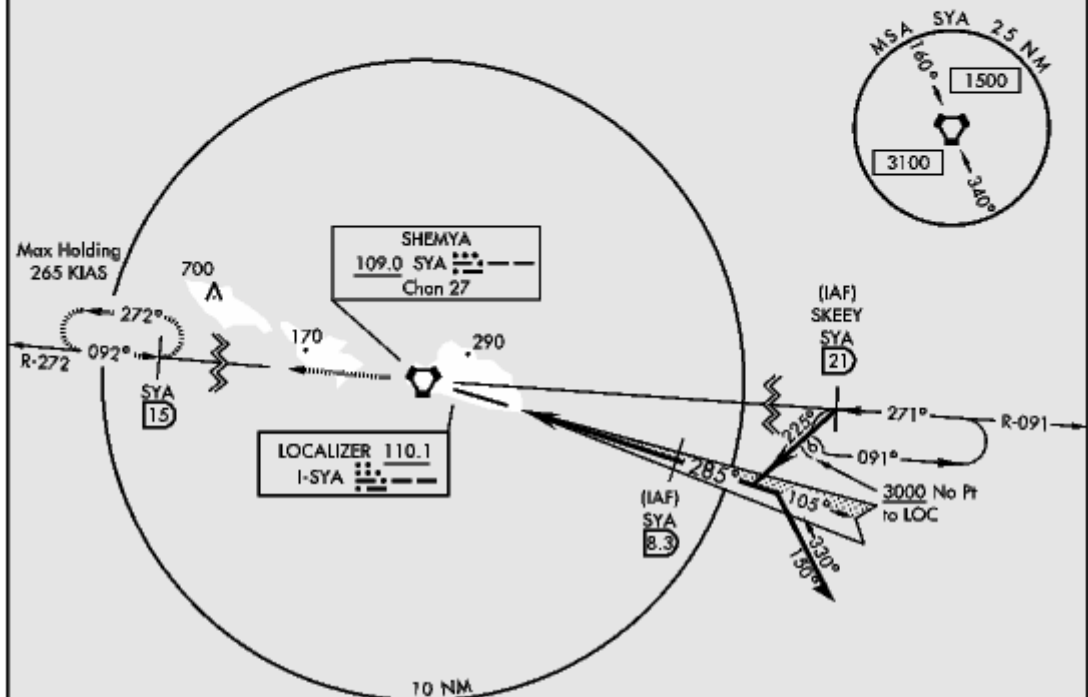
- When ALS inop, increase vis 1/4 mile.
- Circling Not Authorized in area N of Rwy 10-28.



MISSED APPROACH: Climb to 3000 on R-272 and hold at 15 DME.

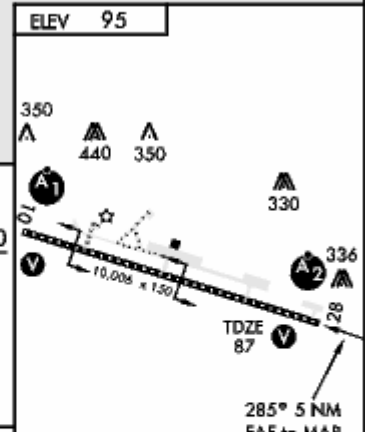
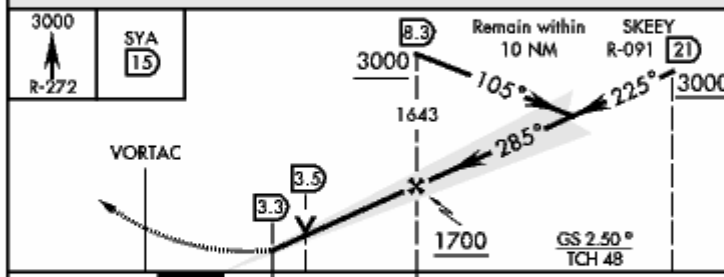
ANCHORAGE CENTER <b>119.1 339.8</b>	CTAF <b>127.2 352.05 0</b>	ASOS <b>135.65</b>
--	-------------------------------	-----------------------

CAUTION: Numerous obstructions in area N of Rwy 10-28.



1375

EMERG SAFE ALT 100 NM 5100



CATEGORY	A	B	C	D
S-ILS 28 *	287-1/2	200 (200-1/2)	287-3/4	200 (200-3/4)
S-LOC/DME 28 *	340-3/4 253 (300-3/4)			
CIRCLING**	460-1 365 (400-1)	560-1 465 (500-1)	560-1 1/2 465 (500-1 1/2)	660-2 565 (600-2)

FAF to MAP 5 NM					
Knots	60	90	120	150	180
Min:Sec	5:00	3:20	2:30	2:00	1:40

SHEMYA I., ALEUTIAN I., ALASKA  
03247

52° 43' N-174° 07' E

EARECKSON AS (PASY)

# ILS RWY 28

Effective 2 OCT 2003 - 30 OCT 2003

SHEMYA I., ALEUTIAN I., ALASKA

# VOR/DME or TACAN RWY 28

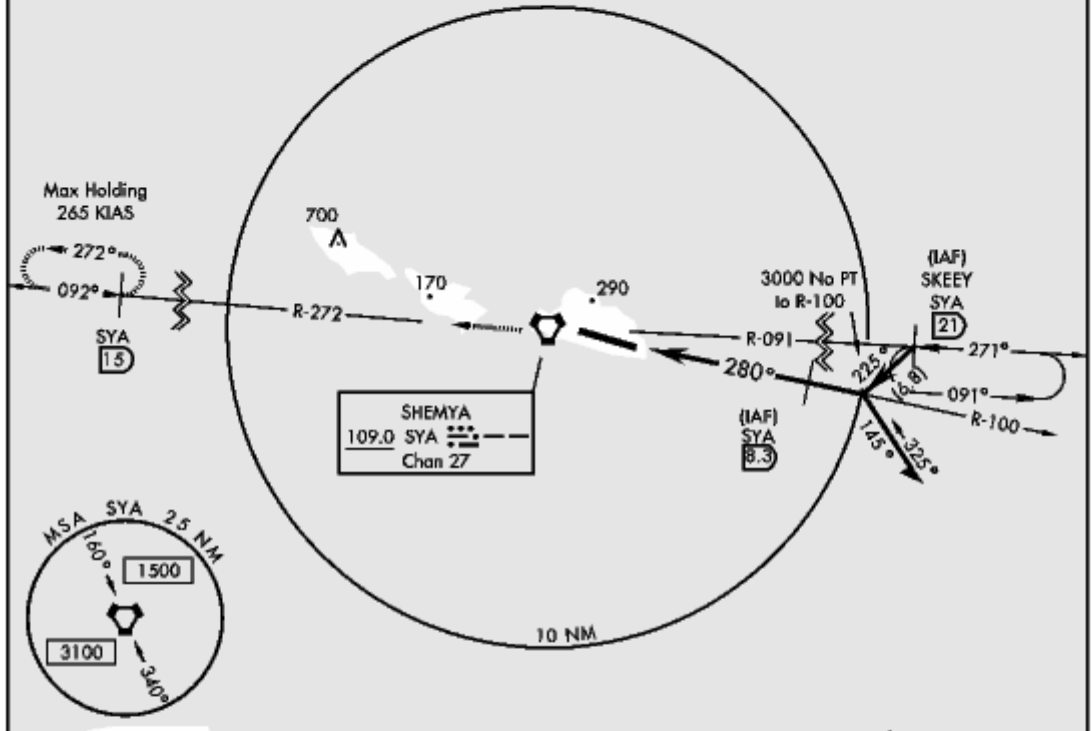
VORTAC SYA 109.0 Chan 27	APCH CRS 280°	Rwy ldg 10,008 TDZE 87 Arprt Elev 95	AL-1246 [USAF]	EARECKSON AS (PASY)
--------------------------------	------------------	--	----------------	---------------------

• When ALS inop, increase vis ¼ mile.  
 \*\* Circling Not Authorized in area N of Rwy 10-28.

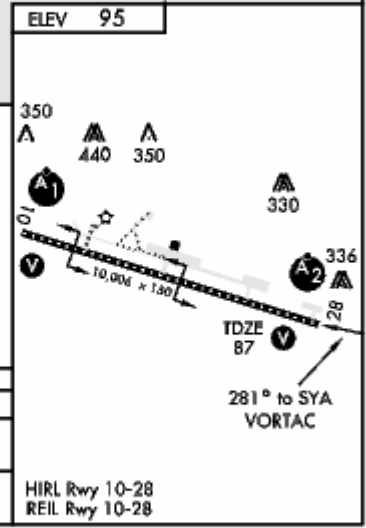
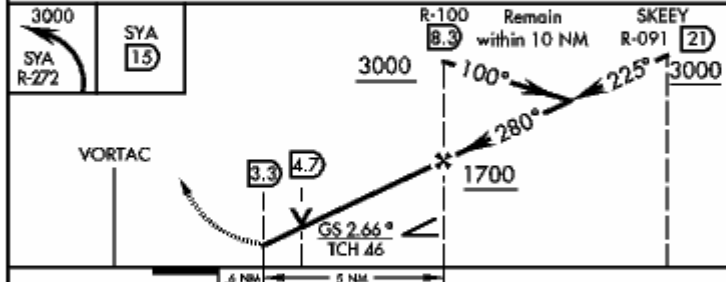
SALS MISSED APPROACH: Climb to 3000 on R-272 and hold at 15 DME.

ANCHORAGE CENTER 119.1 339.8	CTAF 127.2 352.05 0	ASOS 135.65
---------------------------------	------------------------	----------------

CAUTION: Numerous obstructions in area N of Rwy 10-28.



EMERG SAFE ALT 100 NM 5100



CATEGORY	A	B	C	D
S-28*	640-¾ 553 (600-¾)	640-1¼ 553 (600-1¼)	640-1½ 553 (600-1½)	640-1½ 553 (600-1½)
CIRCLING**	640-1 545 (600-1)	640-1½ 545 (600-1½)	660-2 565 (600-2)	

HIRL Rwy 10-28  
REIL Rwy 10-28

SHEMYA I., ALEUTIAN I., ALASKA 52° 43' N-174° 07' E EARECKSON AS (PASY)

# VOR/DME or TACAN RWY 28

Effective 2 OCT 2003 - 30 OCT 2003