

Airport Information for
PRETORIA / WONDERBOOM (FAWB-PRY)

General

Latitude 25°38'60"S
Longitude 28°13'0"E
Elevation 1248 m
Open hrs Mon-Sun: 0400-1800
Customs
Fuel 100LL, Jet
RFF

Runways

Name 06
Width 22 m
Length (TKOF) 1273 m
Length (LDG) 1273 m
Surface Asphalt
Notes
Strength (PCN) 30
Strength (spec)

Name 11
Width
Length (TKOF) 1828 m
Length (LDG) 1828 m
Surface
Notes
Strength (PCN)
Strength (spec) LCN 40

Name 24
Width 22 m
Length (TKOF) 1273 m
Length (LDG) 1273 m
Surface Asphalt
Notes
Strength (PCN) 30
Strength (spec)

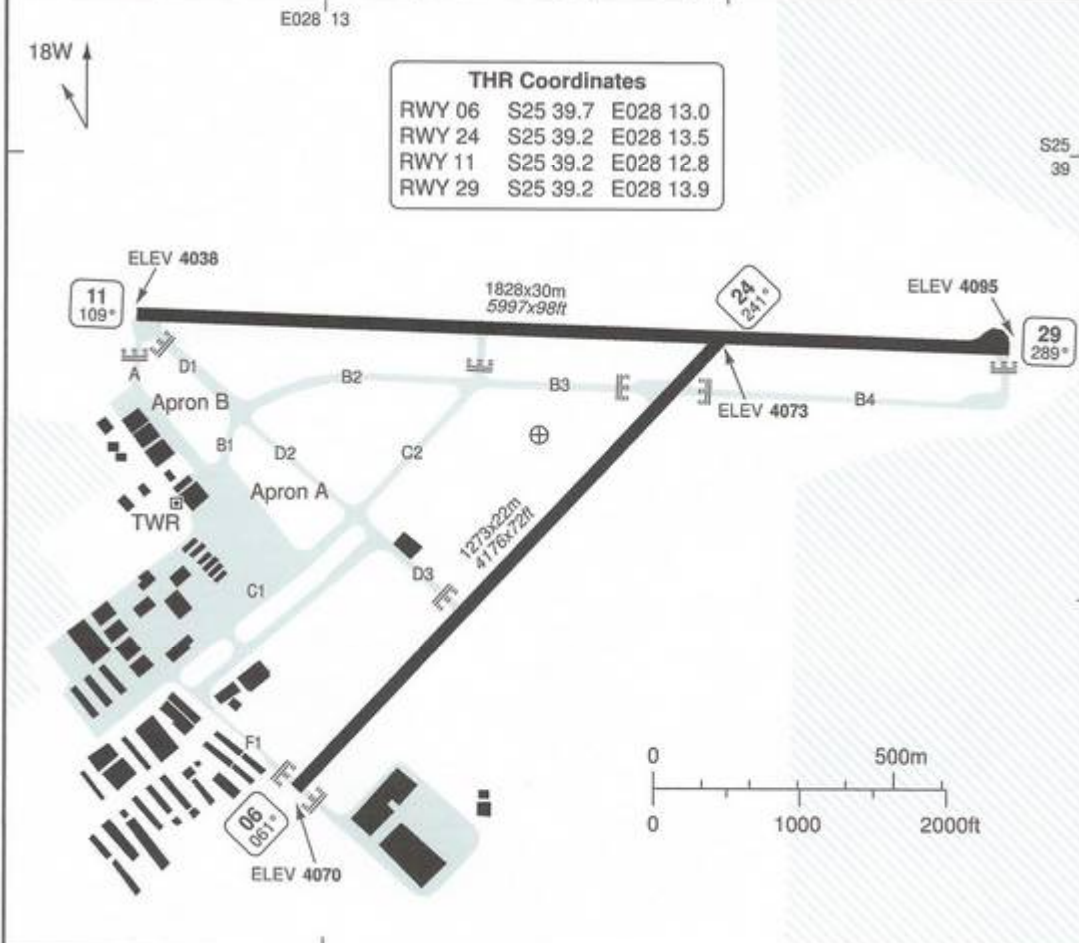
Name 29
Width
Length (TKOF) 1828 m
Length (LDG) 1828 m
Surface
Notes
Strength (PCN)
Strength (spec) LCN 40

10 - 1 25 JUN 14

South Africa - FAWB / PRY
Wonderboom **PRETORIA**

AERODROME

Wonderboom GND 120.6	TWR 118.35	AD Elev 4095		ARP: S25 39.3 E028 13.3	RFF: CAT 5 ①	AD HR: ②
-------------------------	---------------	--------------	--	-------------------------	--------------	----------



RWY	Slope	TORA m/ft	LDA m/ft	ALS	REDL	Additional
06	0	1273 / 4176	1273 / 4176	-	-	-
24	0	1273 / 4176	1273 / 4176	-	-	-
11	+1	1828 / 5997	1828 / 5997	-	avbl	P 2.6° ③
29	-1	1828 / 5997	1828 / 5997	-	avbl	P 2.7° ③

① MON-SUN 03-18; HOL by NOTAM. ② TWR/APP: MON-SUN 04-18; GND: MON-SUN 05-17; HOL by NOTAM. ③ Use PAPI with caution when beyond 4nm.

ARCAL (avbl after 1700): 118.35 (RWY 11/29 5 clicks to turn lights on, 3 clicks for intensity. Lights will stay on for 15mins.)

EU OPS		TAKE OFF MINIMA	
RWY	Facilities	RVR A B C	
All	RCL (day only) or RCL + REDL	400m	
	NIL (day only)	500m	

© Navtech - fawb01laorg0

10 - 1

Reverse side blank
CHART LINKED TO NAVIGRAPH ACCOUNT <TOURNESOL>

Change: RFF
THIS CHART IS A PART OF NAVIGRAPH CHARTS AND IS INTENDED FOR FLIGHT SIMULATION USE ONLY

GENERAL

Wonderboom PRETORIA

GENERAL

1. AERODROME RESTRICTION

AD closed to fixed wing ACFT on first MON of the month due to maintenance at RWY 11/29 and RWY 06/24 intersection. 10min PN.

2. WARNING

- 2.1 Animal and bird hazard.
- 2.2 Occasional blasting 1.3nm north of AD. Height: 2000
- 2.3 ACFT in circuit to north should remain north of railway line and west of Bon Accord Dam as advised by ATC.

3. CAUTION

- 3.1 Wind shear on THR of all RWYs due to close proximity of hangars and geographical features to RWYs and AD. Normally present when wind speed exceeds 15kt.
- 3.2 Pilots are to exercise caution when on final approach for RWY 24 due to high ground 2nm from THR.
- 3.3 Parachuting: Drop zone designated as area south of RWY 11/29 and 06/24:
- Every SAT and Public Holiday during ATS hrs only, from 0700 till sunset.
 - Every SUN and Religious Public Holiday during ATS hrs only, from 0900 till sunset.
 - Every second WED from 1000 till 1400.

4. CIRCUITS

- 4.1 RWY 29 and RWY 24 right hand circuit.
- 4.2 Circuit ALT:
Piston Engine – 5100
Turbine Engine – 5600

5. NOISE ABATEMENT PROCEDURE

- 5.1 No low level circuits on SUN before 0900.
- 5.2 No circuit training before 0900 on SUN and religious holiday.

5.3 No parachuting before 0900 on SUN and religious holiday.

5.4 No engine runs allowed: MON-SAT 17-05 and SUN before 0900 and after 1500.

6. RWY RESTRICTION

- 6.1 RWY 11/29 closed due maintenance every MON between 06-10.
- 6.2 RWY available in case of emergency and for weight restricted ACFT with 10min PN.

7. TWY RESTRICTION

- 7.1 TWY D1 width 22m/72ft.
- 7.2 All TWYs width 15m/49ft except TWY D1.
- 7.3 Engine running only to be conducted on designated engine running area at main windsock east of TWY D4. Taxi clearance to be obtained from ATC on 120.6 during GND hrs and from 118.35 outside of these hours.
- 7.4 Vehicle movement on TWY C between apron A and apron C, pilots are to exercise caution.

8. TAXI

- 8.1 Pilots taxiing to or from the Bravo and Charlie (main) apron or fuel bay have to obtain instructions from ATC on 120.6.
- 8.2 Pilots taxiing on TWY C2 to exercise caution between TWY B and TWY D due to helicopter circuits parallel to RWY 11/29.
- 8.3 ATC view of TWY F approximately 80% obscured due to hangars. No ATC clearance will be issued and pilots are to exercise caution when taxiing to and from THR RWY 06.

9. APRON

ACFT tie-down points available on main and grass apron.

WEF 24 JUL 14

10 - 4 25 JUN 14

South Africa - FAWB / PRY

GENERAL

Wonderboom **PRETORIA**

10 - 4

ARRIVAL

1. **MINIMUM RWY OCCUPANCY TIME**
Unless otherwise advised by ATC, pilots landing on RWY 11 and RWY 29 may vacate onto RWY 24 and right onto TWY B.

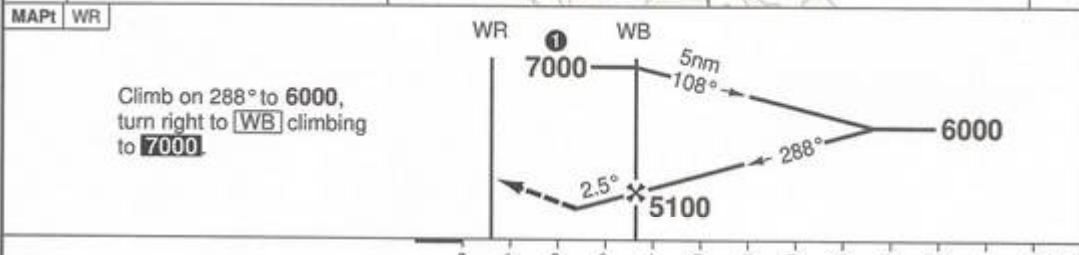
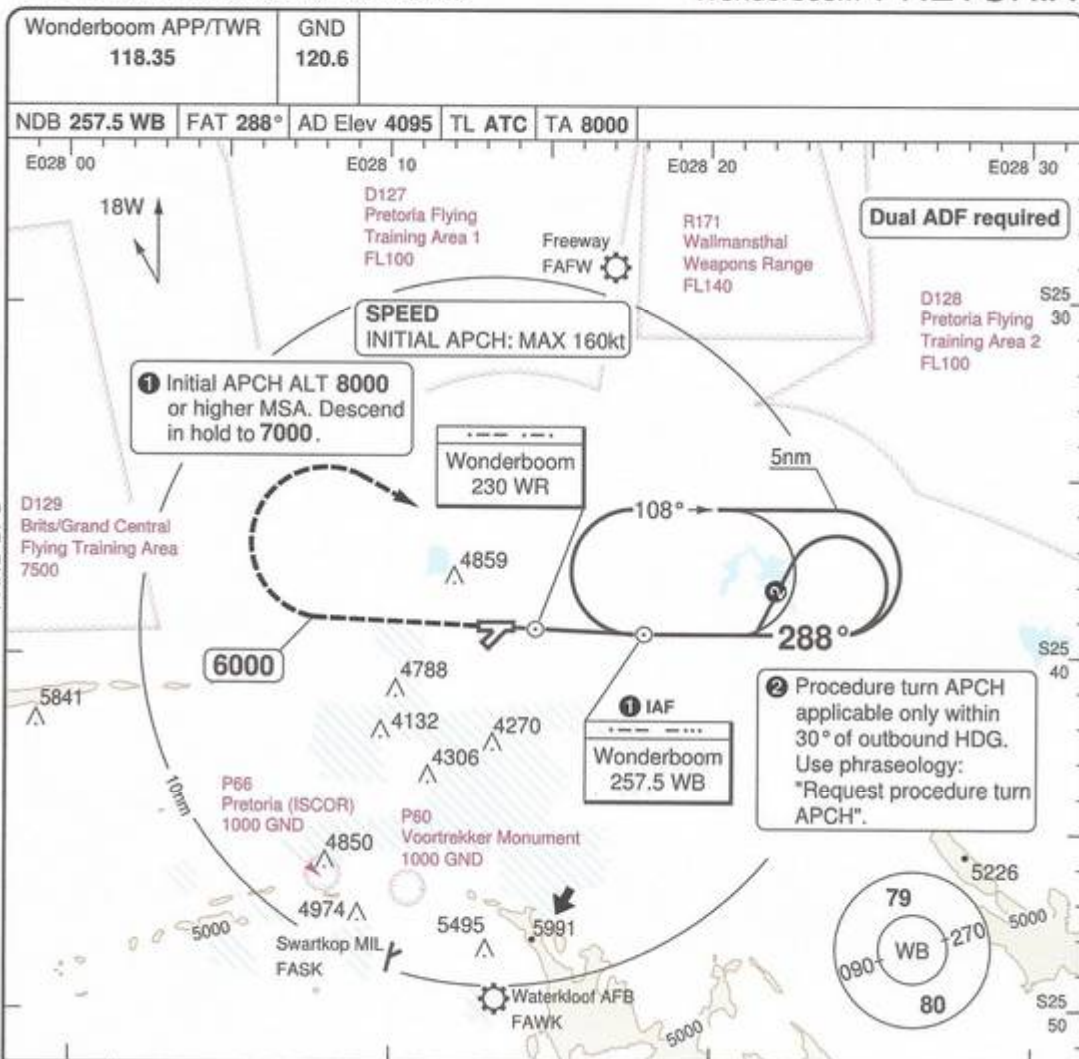
2. **PARKING**
 - 2.1 Parking bays A1, A2 reserved for medium sized ACFT.
 - 2.2 Parking bays B1-B4 reserved for scheduled flights only.
 - 2.3 Parking Bays B5-B7 reserved for charter flights only, with the maximum parking period of 2hrs.
 - 2.4 New apron C reserved for the parking of smaller ACFT, less than 5000kg.
 - 2.5 Grass areas are to no longer be used for parking of ACFT.
 - 2.6 No parking by any ACFT is allowed on or close to any TWY, this includes the TWYs located within apron and AD movement area.

DEPARTURE

1. **NOISE ABATEMENT PROCEDURE**
ICAO Standard NADP 2 applies.

NDB RWY 29 CIRCLING CAT A/B/C

Wonderboom PRETORIA



ACFT	NDB Circling	Note: Circling at Pilots discretion. North of AD only.	LDA 1828x30 5997x98ft P 2.7°
A	4500 (405) 1.5km		
B	4600 (500) 1.6km		
C	4700 (600) 2.4km		
D	NA		

© Navtech - fawb01aip00

Change: New print

THIS CHART IS A PART OF NAVIGRAPH CHARTS AND IS INTENDED FOR FLIGHT SIMULATION USE ONLY

50 - 1
CHART LINKED TO NAVIGRAPH ACCOUNT <TOURNESOL>
Reverse side blank
NALS