

Airport Information for
JOHANNESBURG / RAND (FAGM-)

General

Latitude 26°13'60'S
Longitude 28°8'60'E
Elevation 1671 m
Open hrs Mon-Fri: 0400-1700; Sat-Sun: 0500-1600
Customs
Fuel 100LL, Jet
RFF CAT 6 HS

Runways

Name 11
Width
Length (TKOF) 1584 m
Length (LDG) 1584 m
Surface
Notes
Strength (PCN)
Strength (spec) LCN 51

Name 29
Width
Length (TKOF) 1719 m
Length (LDG) 1584 m
Surface
Notes
Strength (PCN)
Strength (spec) LCN 51

10 - 1 | 25 JUN 14

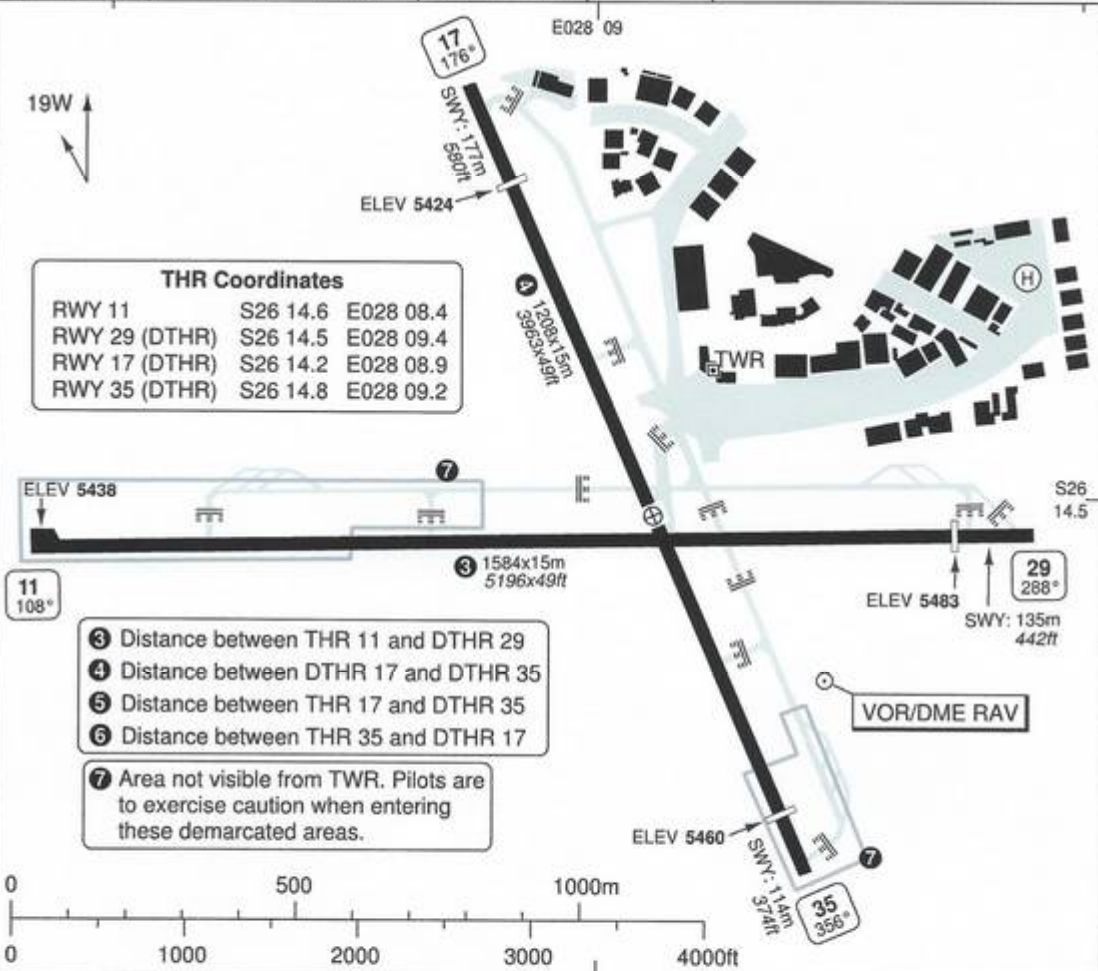
South Africa - FAGM / QRA

AERODROME

Rand JOHANNESBURG

Rand TWR 118.7	Johannesburg TWR 118.6 E 118.1 W	ATIS 126.2 115.2
-------------------	--	------------------------

AD Elev 5483 | ARP: S26 14.5 E028 09.1 | RFF: CAT 6 ① | AD HR: ②



RWY	Slope	TORA m/ft	LDA m/ft	ALS	REDL	Additional
11	+0.9	1584 / 5196 ③	1584 / 5196 ③	-	avbl ⑧	P 3°L/R
29	-0.9	1719 / 5639	1584 / 5196	-	avbl ⑧	P 3°L/R
17	+0.9	1385 / 4543 ⑤	1208 / 3963 ④	-	avbl ⑧	P 3.5°L/R
35	-0.9	1322 / 4337 ⑥	1208 / 3963 ④	-	avbl ⑧	P 3°L/R

① MON-FRI 04-19; SAT, SUN, HOL 04-16; After hours call out response within 10 min.
 ② MON-FRI 04-17; SAT-SUN 05-16; HOL 05-16 or by NOTAM. ③ White.

EU OPS		TAKE OFF MINIMA	
RWY	Facilities	RVR	A B C
All	RCL (day only) or RCL + REDL	400m	
	NIL (day only)	500m	

Change: DTHR coord

THIS CHART IS A PART OF NAVIGRAPH CHARTS AND IS INTENDED FOR FLIGHT SIMULATION USE ONLY

© Navtech - fagm01laorg0

CHART LINKED TO NAVIGRAPH ACCOUNT <TOURNESOL>

AERODROME

10 - 2

GENERAL

1. WARNING

- 1.1 Windshear on APCH RWY 35.
- 1.2 High tension power lines on APCH to RWY 17 marked with red/white spheres.
- 1.3 High trees on APCH RWY 17.
- 1.4 Helicopter Training Squares:
 - a) Adjacent to THR RWY 17 and RWY 29.
 - b) Landing area: 20m x 20m Grass
 - c) Hours of operation: HJ

2. COMMUNICATION

All non local ACFT inbound to contact GND on frequency 123.65 for landing fees.

3. CIRCUITS

RWY 11 and 17 right hand circuit.
Circuit ALT: 6300

4. TRAFFIC NOTES

Inbound traffic from South to route via NDB 307.5 RD.

5. TAXI

All fixed wing ACFT prohibited from taxiing on tarred strip immediately W of National Airways Corporation (NAC) Hangar 6, 7 and 8.

ACFT to use TWY leading up to THR RWY 17.

The above mentioned strip is intended for use as a helicopter apron.

6. PARKING

- 6.1 ACFT to park on main apron at pilot's discretion.
- 6.2 ACFT must adhere to RWYs and TWYs and park in the parking area.

WEF 24 JUL 14

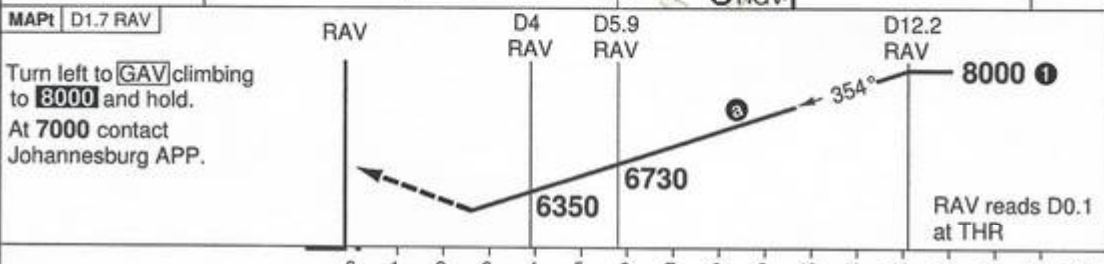
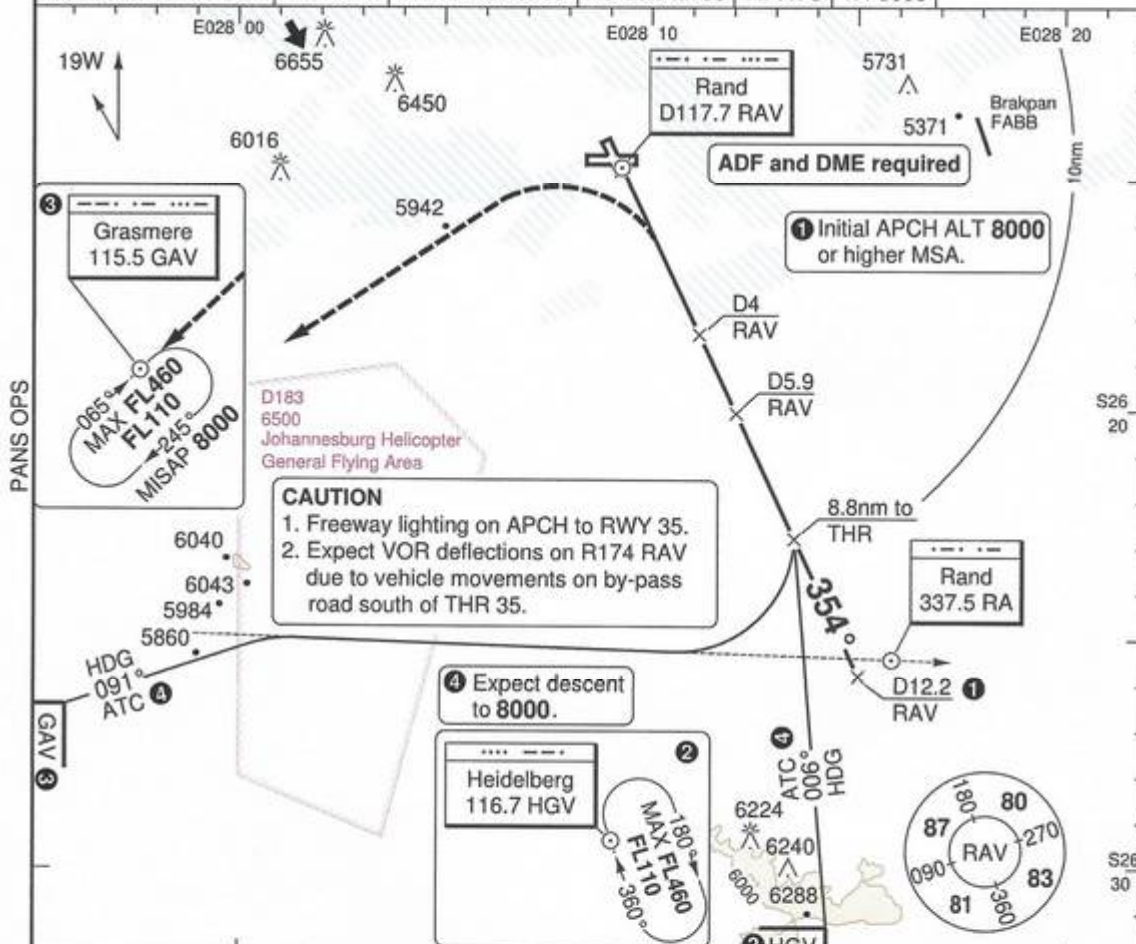
50 - 1 | 25 JUN 14

South Africa - FAGM / QRA

VOR A RWY 35 CIRCLING CAT A/B/C

Rand JOHANNESBURG

Johannesburg APP RAD 124.5 S/E 123.7 W	Rand TWR 118.7	Johannesburg TWR 118.6 E 118.1 W	ATIS 126.2 115.2
VOR/DME 117.7 RAV FAT 354° DTHR Elev 5460 AD Elev 5483 TL ATC TA 8000			



ACFT	VOR+DME Circling
A	6010 (526) 1.5km
B	6010 (526) 1.6km
C	6310 (826) 2.4km
D	NA

Note: Circling at pilots discretion.

GS	80	100	120	140	160
ROD 3°	420	520	630	730	830

State MNM ALT gives a shallow angle of descent (2°). Use advisory ALTs to obtain 3° angle of descent.

DME RAV	3° ALT	LDA 1208x15 3963x49ft P 3°/R
8.1	8000	
7.0	7670	
6.0	7360	
5.0	7040	
4.0	6730	
3.0	6420	
2.0	6100	
1.7	6010	NALS

© Navtech - fagm01aip00

Reverse side blank
CHART LINKED TO NAVIGRAPH ACCOUNT <TOURNESOL>

Change: Proc, NDB NMT withdrawn

THIS CHART IS A PART OF NAVIGRAPH CHARTS AND IS INTENDED FOR FLIGHT SIMULATION USE ONLY